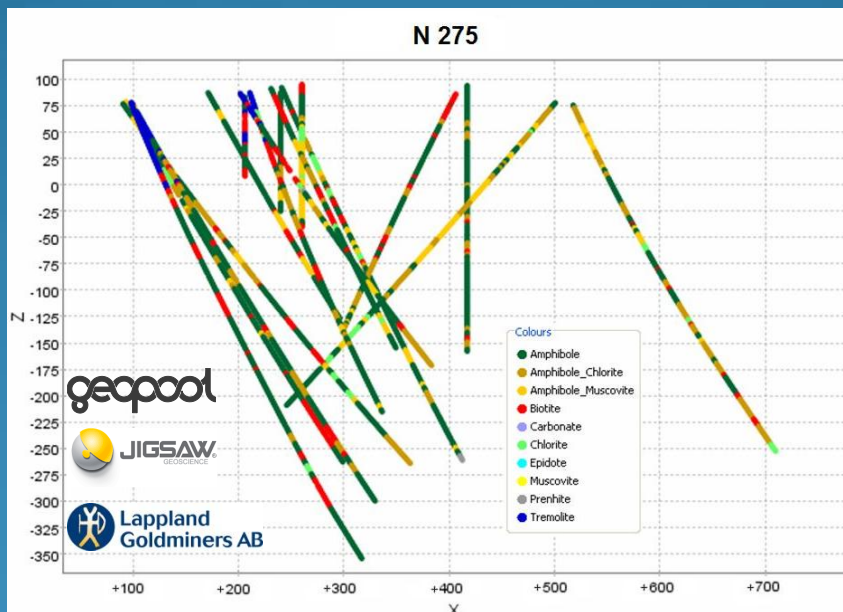


SMAM

Spectral Mapping of Alteration Minerals

A service provided by

Ab Scandinavian GeoPool Ltd



geepool

Spectral geology is a means of getting mineral information from samples rapidly and cost effectively.



The ASD TerraSpec field portable mineral/soil spectrometer.

TerraSpec (ASD Inc.)[®]

- is created specifically for determining the mineralogy of rocks and soils.
- can be used on e.g. core, rock chips, grab specimens, powders, outcrops and soils.
- is light and field portable.

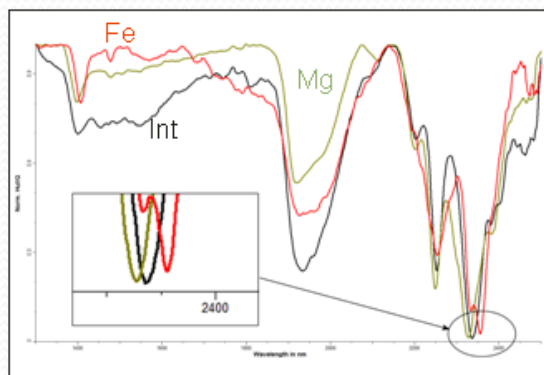
We are using TerraSpec[®] with The Spectral Geologist (TSG[™]) software for:

- mapping alteration minerals in order to identify alteration zones and to define ore bodies.
- analysis of a wide variety of deposit types from epithermal to porphyries, kimberlites, IOCG, carbonate hosted base metals, greenschist belts, shear veins, skarns, and disseminated gold systems.

Example from previous project

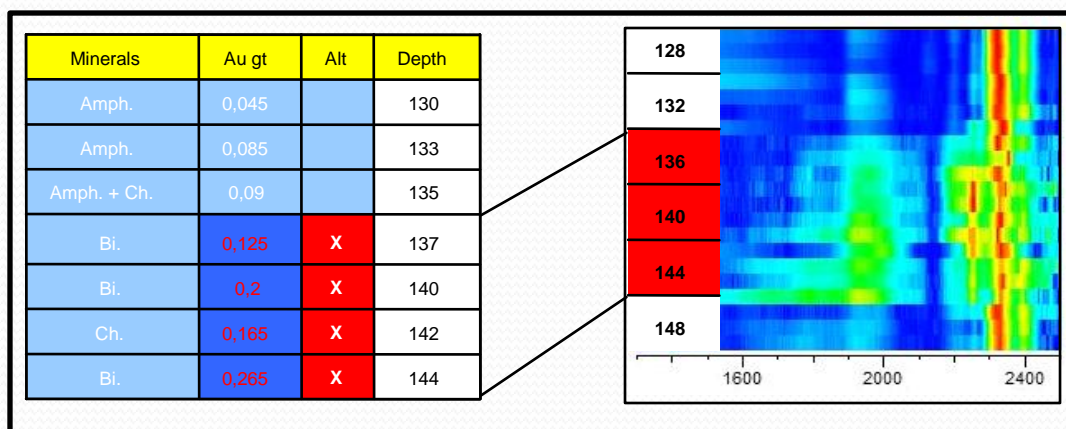
By using TerraSpec it is possible to log up to 1500 m of core per day...

...resulting in reflectance spectra of alteration minerals to interpret with TSG...

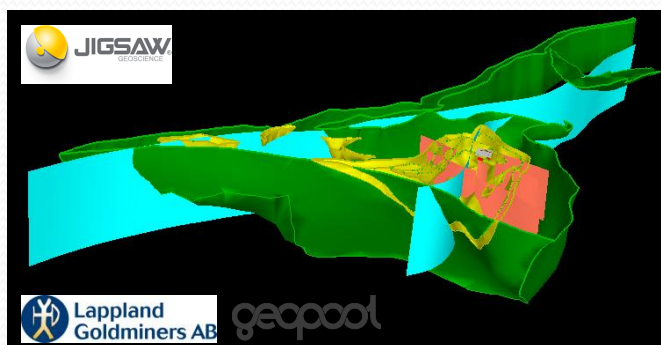


...and even detect variations in individual mineral species.

Combining TSG interpretations is an excellent way of comparing the presence of ore related to mineralogy and alteration.



The results can easily be used when compiling 2D or 3D models of ore bodies and related alteration zones.



TerraSpec® product specifications:

- Spectral range 350-2500 nm (VIS-SWIR).
- Scanning time 100 milliseconds/spectrum.
- Since it's introduction in early 2004, the TerraSpec has become the mining industry's standard in field-portable exploration instrumentation.

The Spectral Geologist (TSG™):

- Analyze from small (<100) to very large (50,000+) spectral data sets.
- Turn 1000's of spectra into calculated mineralogical indices for analysis of specific mineral characteristics (such as composition).
- Automate mineral interpretation with The Spectral Assistant (TSA™) or the Aux Match function.
- Integrate spectrally-derived mineral data with imported geochemical and geological log data.
- Visualize and Plot your results in many different formats and views, including down hole, or as sections, maps and scatter plots.

Contact information:

Ab Scandinavian GeoPool Ltd
www.geopool.fi

mathias.forss@geopool.fi +358 (0) 50 591 3976
matias.siljander@geopool.fi +358 (0) 40 735 8585
thomas.levin@geopool.fi +358 (0) 40 504 8045
anna.dumell@geopool.fi +358 (0) 400 797 567